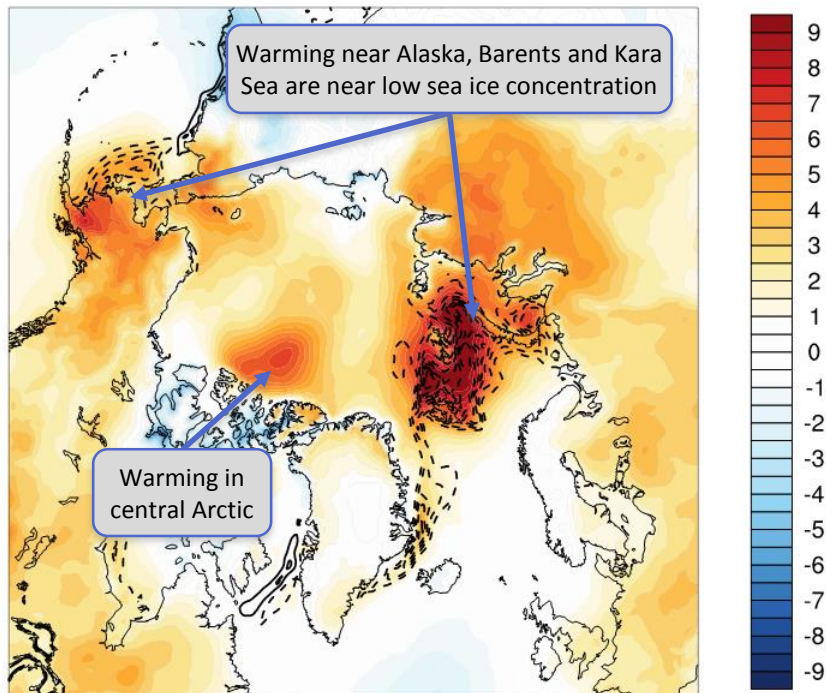
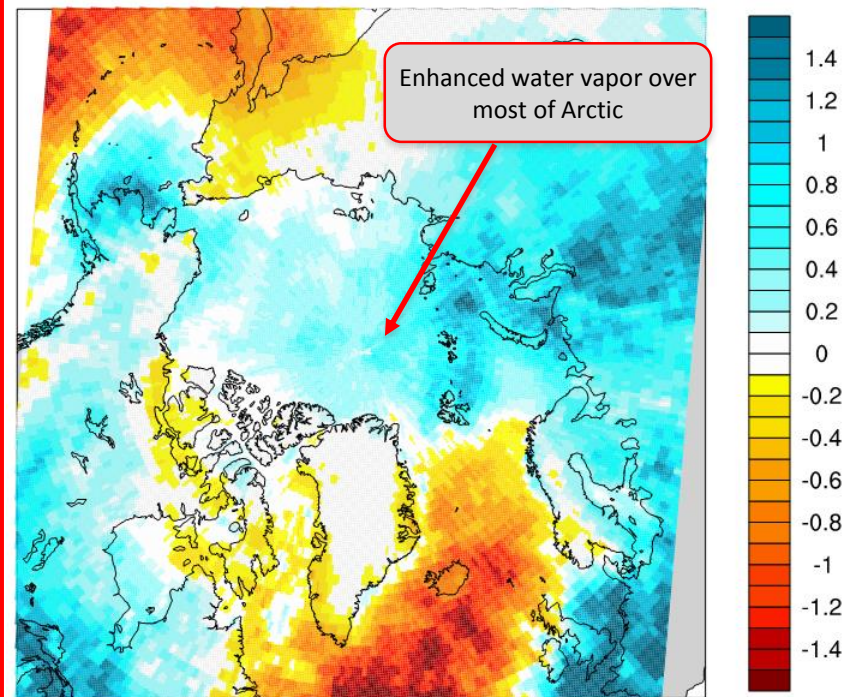


Arctic Processes in GEOS Models and Analyses

MERRA-2 2m Temperature Anomaly [K]
SSM/I Sea Ice Anomaly (black dashed)



AIRS Column Water Vapor Anomaly [mm]



Cullather et al., 2016

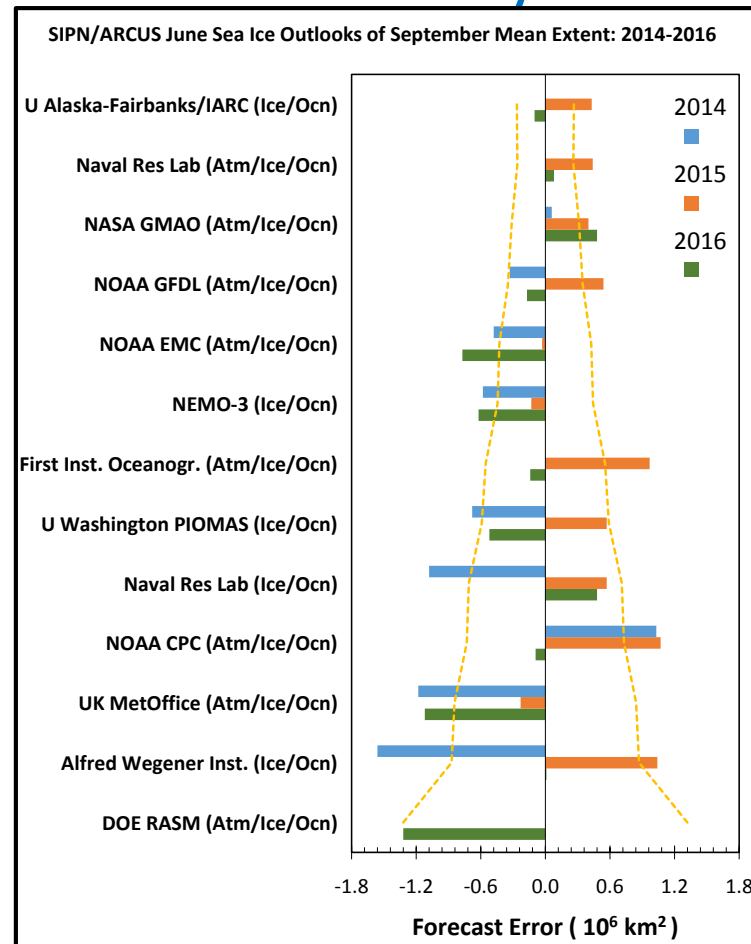
Arctic Processes in GEOS Models and Analyses

- **Overview**

- Provide global weather forecasts in support of Arctic field studies.
- Global atmospheric reanalyses (MERRA-2).
- Sub-seasonal and seasonal predictions (NMME).

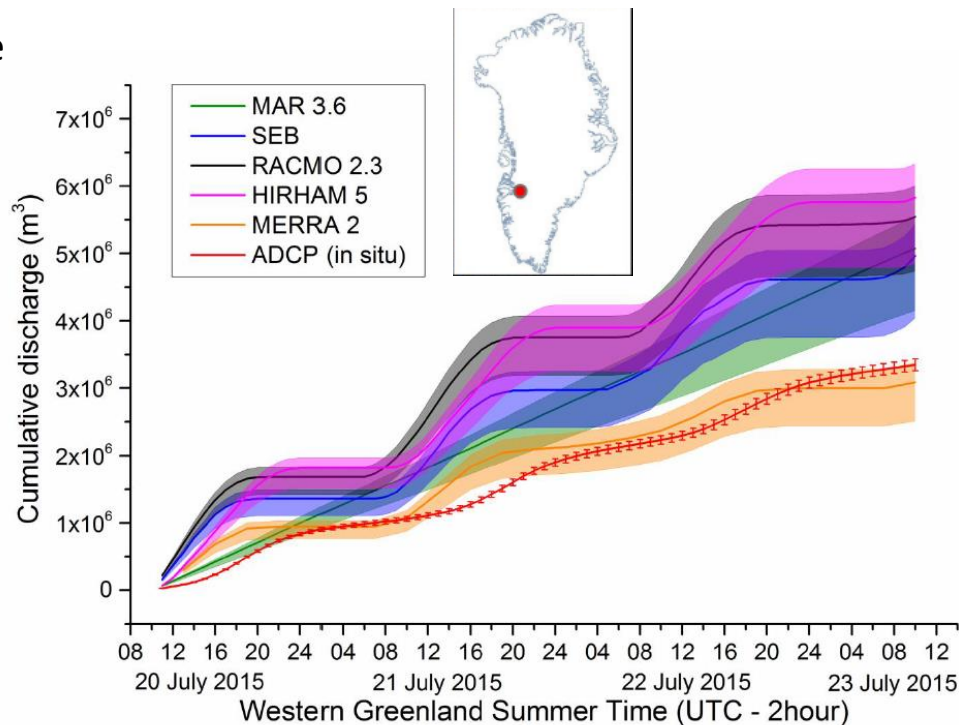
- **Sea Ice**

- Participation in Sea Ice Outlook, Sea Ice Prediction Network.
- Experiments with initialization of sea ice thickness in coupled seasonal forecasts.



Arctic Processes in GEOS Models and Analyses

- **Land Ice (e.g., Greenland Ice Sheet)**
 - Development of improved surface hydrology, competitive with regional climate models.
 - Coupling with JPL land ice model.
- **Non-Glaciated Land**
 - Permafrost representation.
 - NCAR phenology/carbon model.
 - Support of ABoVE mission.
- **Atmosphere**
 - Moist turbulent boundary layer scheme.
 - Proposed two-moment cloud microphysics: mixed-phase.
 - Support of ARISE mission.
 - High resolution topography.



Cumulative Surface Runoff, Behar Catchment

Smith et al. (2017)